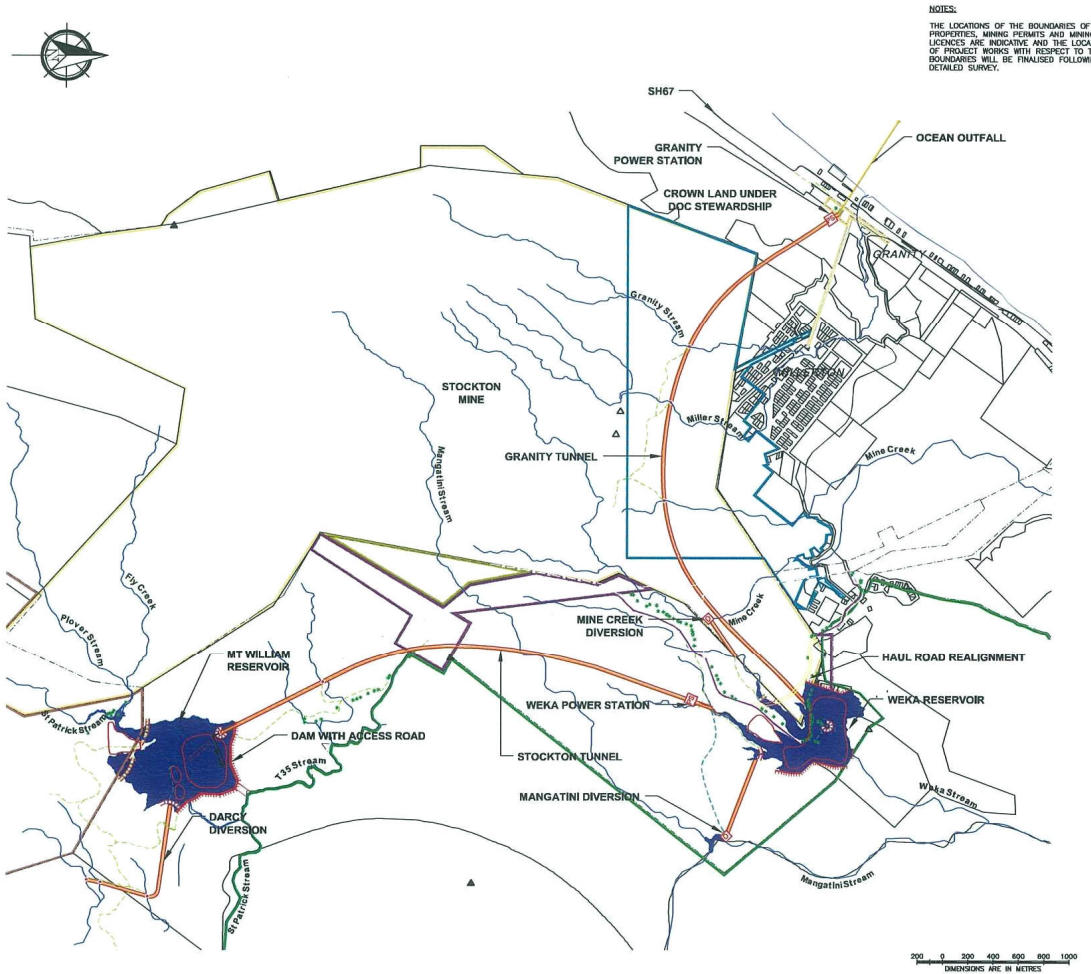


PUBLIC NOTIFICATION OF RESOURCE CONSENT APPLICATIONS

Stockton Plateau Hydro Project Applicant: Hydro Developments Ltd



NOTES:
THE LOCATIONS OF THE BOUNDARIES OF PROPERTIES, MINING PERMITS AND MINING LICENCES ARE INDICATIVE AND THE LOCATION OF PROJECT WORKS WITH RESPECT TO THE BOUNDARIES WILL BE FINALISED FOLLOWING DETAILED SURVEY.

The Stockton Plateau Hydro Scheme diverts tributaries of the Ngakawau River to generate in the order of 240 GWhr of renewable energy.

The majority of the scheme infrastructure is situated on the Stockton Plateau in an area between the Stockton Mine and the Ngakawau Ecological Area.

The hydro proposal includes two reservoirs located on the Stockton Plateau, two power stations, one at Granite (Granity power station) and one on the Stockton Plateau (Weka power station), with the reservoirs and power stations interconnected by tunnels. The upper most storage reservoir (Mt William reservoir) includes a dam of approximately 40m high across St Patrick Stream and will inundate an area of approximately 50 hectares. The second storage reservoir (Weka reservoir) is situated in the vicinity of Tin Town corner and includes a dam of approximately 25m high across the Weka gorge and will inundate an area of approximately 28 hectares.

The Granity power station is to be located within a tunnel with a portal which outlets immediately north of the Granity museum, approximately 20m up the hill slope beyond the museum.

Tailwater from the Granity power station will be discharged into the coastal marine area via a buried pipeline and diffuser just beyond the wave break zone, in a line roughly approximate with the Granity Lyric Theatre.

The map attached shows the proposed location of the reservoirs, power stations, tunnels and associated infrastructure.

The notified resource consent applications include applications for land use consents, coastal permits (including a Restricted Coastal Activity (600m long ocean outfall pipeline and diffuser)), water permits and discharge permits and relating to the following general activities associated with the construction, operation and maintenance of the Stockton Plateau Hydro Scheme (a full list of all resource consent applications is contained in the submission pack):

- Consents to build dams within Weka gorge and St Patrick stream and create storage reservoirs. These dams are to be made of

roller compacted concrete and will comprise short sections of dam across the stream beds with long sections of low shoulder dams. The dams will be made from granite aggregate excavated from the tunnels and reservoir sites. Consents are also required for discharges related to construction including dust and discharge of plant process water.

- Consents to drive approximately 10km of tunnels which will connect Mt William storage reservoir, Weka power station, Weka storage reservoir and Granity power station. Consents are also required for various discharges that will occur at the tunnel portal outlets including dust, discharge of groundwater seepage and construction related noise and vibration emissions.
- Consents to divert tributaries of the Ngakawau River contaminated with acid mine drainage to form the Weka and Mt William reservoirs. The scheme will dam and/or divert the headwaters of Darcy, Fly, Plover and T31 and St Patrick streams to create the Mt William storage reservoir and will dam and/or divert Upper Mine, Mangatini, A.J., Weka and Sandy streams to create the Weka storage reservoir.
- Consents to build an ocean outfall which will comprise a pipeline within the foreshore and seabed approximately 600m long and buried some 4m below the seabed, terminating in an outfall diffuser. Tailwater from the Granity power station will be discharged via this ocean outfall.
- Consents for ancillary works associated with the hydro scheme including construction of approximately 6km of temporary and permanent roading, construction of short sections of overhead power lines from the power stations to provide connection into the existing distribution networks, construction and operation of the power stations, realignment of a section of the Stockton Mine haul road at Tin Town corner, construction of an outfall into Granity Creek to divert tailwater from the Granity power station during emergency situations and consent to disturb/inundate approximately

460m section of a historic coal tramway on the Stockton Plateau.

- Consents for exploratory drilling.

The duration of the land use consents, water permits and discharge permits sought are provided in the consent application. Hydro Developments Limited seeks to extend the statutory lapsing period for all the resource consents to 10 years.

Full copies of the resource consent applications and all supporting information can be viewed at the following offices:

West Coast Regional Council
388 Main South Road
Greymouth

Buller District Council
6 Brougham St
Westport

Copies may also be viewed at the following locations:

Sue Thompson Memorial Library
87 Palmerston St
Westport
(9.30am to 5pm Monday-Friday,
10.30-1 Saturday)

Granity Community Library
Torea St
Granity
(Wed/Sun pm)

Copies can also be found on the following websites:

www.hydrodevelopments.co.nz
www.wcrc.govt.nz

If you would like to make a submission on these resource consent applications you can request a submission pack from Karen Glover at the West Coast Regional Council on 0508 800 118 or the Duty Planner at the Buller District Council on (03) 788 9112.

If you have any questions about the resource consent applications to the West Coast Regional

This public notice commences the period during which submissions can be received from the public on 49 resource consent applications lodged by Hydro Developments Limited with the West Coast Regional Council and the Buller District Council for the construction, operation and maintenance of a hydro electric power scheme on the Stockton Plateau. The purpose of this notice is to enable you to determine whether you wish to submit on any or all of the 49 resource consent applications covered by this notice. If you consider that you may wish to submit, you can request a submission pack (including the Assessment of Environmental Effects (AEE)) from either the West Coast Regional Council or the Buller District Council and make a submission.

Council, contact Rachel Clark on (03) 7680466. If you have any questions about the resource consent applications to the Buller District Council, contact Jane Bayley, Staig & Smith, Nelson on (03) 545 6883.

If you wish to make a submission on any of the resource consent applications, your submission must be in writing and signed. All submissions should be sent to the address below and must state:

a) The reasons for making the submission, the decision that you wish the Council to make and any general conditions that you seek;

b) Whether or not you wish to be heard in support of your submission and whether you support or oppose (or neither) the applications;

c) Any other matters prescribed in the regulations made under the Resource Management Act 1991.

Submissions should be headed "Hydro Developments Ltd" and must be received at the following address no later than 5pm on Friday 30 January 2009.

Your submission should be sent to the address below.

Address: West Coast Regional Council
PO Box 66
Greymouth 7840

A copy of your submission must also be sent to Hydro Developments Ltd at the following address:

Address: Hydro Developments Ltd
PO Box 204
Westport 7866

Chris Ingle
Chief Executive Officer
West Coast Regional Council

Gary Murphy
Chief Executive Officer
Buller District Council